

**Author:** Mark Monciardini  
**From the Website:** [www.designsbymark.com](http://www.designsbymark.com)  
© Copyright 1998, 1999, 2000, 2000.  
Mark Monciardini All Rights Reserved.

## Photoshop Tips

DESIGNS BY MARK . COM

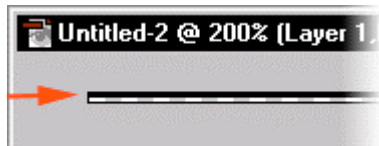
# TV Lines

The basis of this tutorial is not showing how to make the coolest interface, but to show how to use the copy/duplicate commands you need to whip things out quick rather than having 20 duplicate layers and always having your objects paste off alignment, I'll show how to fix that. We will be using Gradients, as it enables us to do this a lot faster. You can see, making a control pad does take a little time and there are a lot more steps to do, I've tried to make it as short as possible.

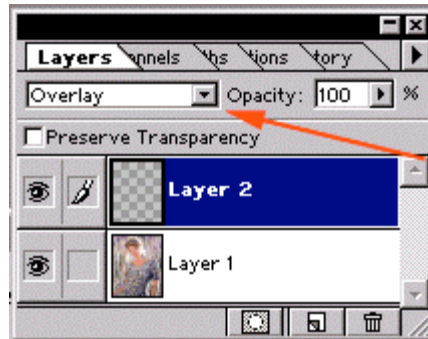


**1** Ok first save this image, Right click and save unless you have a photo or something you want to use. Load the Image up in Photoshop.

**2** Make a new document **400 wide by 2 pixels high** with transparent dotted at bottom. Depending how "wide" your photo is, I always like to make it a little wider so the lines clear the edges.



**3** Ok now double click the line tool to bring up the Line Options tab. For weight we will use 1 pixel and Anti-Aliased ON, Opacity 100%. Draw a horizontal line in the top half of the image, From left to right. (**Zoom in if you have to**). **Select>all**, go to **Edit>Define Pattern**. Ok now close the window your done with that.



**4** Make a new layer. Go to **Layer>New>Layer**, Ok now **Edit>Fill>Use >Pattern**. Ok now she's scanned, But to get a better effect and to bring out the image more, Choose **"Overlay"** from the pop down menu in the layers tab as shown to the right.



Finished.